



KPHHS-1005SURCK

1.0 x 0.5 mm SMD Chip LED Lamp

DESCRIPTIONS

- The Hyper Red source color devices are made with AlGaInP on GaAs substrate Light Emitting Diode
- Electrostatic discharge and power surge could damage the LEDs
- It is recommended to use a wrist band or anti-electrostatic glove when handling the LEDs
- All devices, equipments and machineries must be electrically grounded

FEATURES

- 1.0 mm x 0.5 mm SMD LED, 0.5 mm thickness
- Low power consumption
- Ideal for backlight and indicator
- Package: 2000 pcs / reel
- Moisture sensitivity level: 3
- RoHS compliant

APPLICATIONS

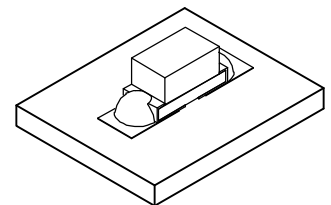
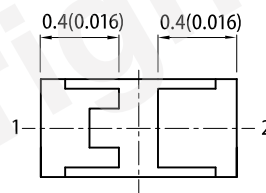
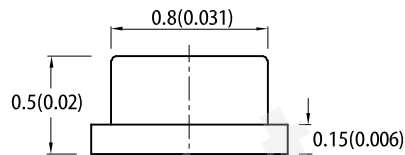
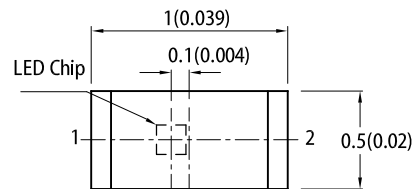
- Backlight
- Status indicator
- Home and smart appliances
- Wearable and portable devices
- Healthcare applications

ATTENTION

Observe precautions for handling electrostatic discharge sensitive devices

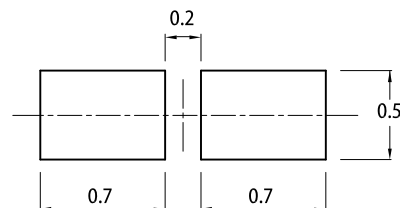


PACKAGE DIMENSIONS



RECOMMENDED SOLDERING PATTERN

(units : mm; tolerance : ± 0.1)



Notes:

1. All dimensions are in millimeters (inches).
2. Tolerance is $\pm 0.1(0.004)$ unless otherwise noted.
3. The specifications, characteristics and technical data described in the datasheet are subject to change without prior notice.
4. The device has a single mounting surface. The device must be mounted according to the specifications.

SELECTION GUIDE

Part Number	Emitting Color (Material)	Lens Type	Iv (mcd) @ 20mA ^[2]		Viewing Angle ^[1]
			Min.	Typ.	2θ1/2
KPHHS-1005SURCK	■ Hyper Red (AlGaInP)	Water Clear	120	220	120°
			*40	*70	

Notes:

1. $\theta_{1/2}$ is the angle from optical centerline where the luminous intensity is 1/2 of the optical peak value.

2. Luminous intensity / luminous flux: $\pm 15\%$.

* Luminous intensity value is traceable to CIE127-2007 standards.

ELECTRICAL / OPTICAL CHARACTERISTICS at T_A=25°C

Parameter	Symbol	Emitting Color	Value		Unit
			Typ.	Max.	
Wavelength at Peak Emission I _F = 20mA	λ_{peak}	Hyper Red	645	-	nm
Dominant Wavelength I _F = 20mA	$\lambda_{\text{dom}}^{[1]}$	Hyper Red	630	-	nm
Spectral Bandwidth at 50% Φ REL MAX I _F = 20mA	$\Delta\lambda$	Hyper Red	28	-	nm
Capacitance	C	Hyper Red	35	-	pF
Forward Voltage I _F = 20mA	V _F ^[2]	Hyper Red	1.95	2.5	V
Reverse Current (V _R = 5V)	I _R	Hyper Red	-	10	uA
Temperature Coefficient of λ_{peak} I _F = 20mA, -10°C ≤ T ≤ 85°C	TC _{λ_{peak}}	Hyper Red	0.13	-	nm/°C
Temperature Coefficient of λ_{dom} I _F = 20mA, -10°C ≤ T ≤ 85°C	TC _{λ_{dom}}	Hyper Red	0.06	-	nm/°C
Temperature Coefficient of V _F I _F = 20mA, -10°C ≤ T ≤ 85°C	TC _V	Hyper Red	-2.0	-	mV/°C

Notes:

1. The dominant wavelength (λ_d) above is the setup value of the sorting machine. (Tolerance λ_d : ±1nm.)
2. Forward voltage: ±0.1V.
3. Wavelength value is traceable to CIE127-2007 standards.
4. Excess driving current and / or operating temperature higher than recommended conditions may result in severe light degradation or premature failure.

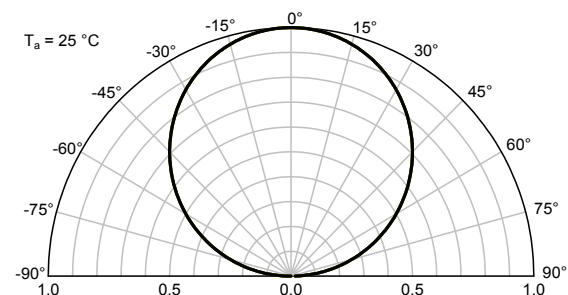
ABSOLUTE MAXIMUM RATINGS at T_A=25°C

Parameter	Symbol	Value	Unit
Power Dissipation	P _D	75	mW
Reverse Voltage	V _R	5	V
Junction Temperature	T _J	115	°C
Operating Temperature	T _{op}	-40 to +85	°C
Storage Temperature	T _{stg}	-40 to +85	°C
DC Forward Current	I _F	30	mA
Peak Forward Current	I _{FM} ^[1]	185	mA
Electrostatic Discharge Threshold (HBM)	-	3000	V
Thermal Resistance (Junction / Ambient)	R _{th JA} ^[2]	440	°C/W
Thermal Resistance (Junction / Solder point)	R _{th JS} ^[2]	285	°C/W

Notes:

1. 1/10 Duty Cycle, 0.1ms Pulse Width.
2. R_{th JA}, R_{th JS} Results from mounting on PC board FR4 (pad size ≥ 16 mm² per pad).
3. Relative humidity levels maintained between 40% and 60% in production area are recommended to avoid the build-up of static electricity – Ref JEDEC/JESD625-A and JEDEC/J-STD-033.

RELATIVE INTENSITY vs. WAVELENGTH



Forward Current vs. Forward Voltage

$T_a = 25^\circ\text{C}$

Y-axis: Forward current (mA) [0 to 50]

X-axis: Forward voltage (V) [1.5 to 2.5]

Luminous Intensity vs. Forward Current

$T_a = 25^\circ\text{C}$

Y-axis: Luminous intensity normalised at 20 mA [0.0 to 2.5]

X-axis: Forward current (mA) [0 to 50]

Forward Current Derating Curve

Y-axis: Permissible forward current (mA) [0 to 50]

X-axis: Ambient temperature ($^\circ\text{C}$) [-40 to 100]

Luminous Intensity vs. Ambient Temperature

$T_a = 25^\circ\text{C}$

Y-axis: Luminous intensity normalised at $T_a = 25^\circ\text{C}$ [0.0 to 2.5]

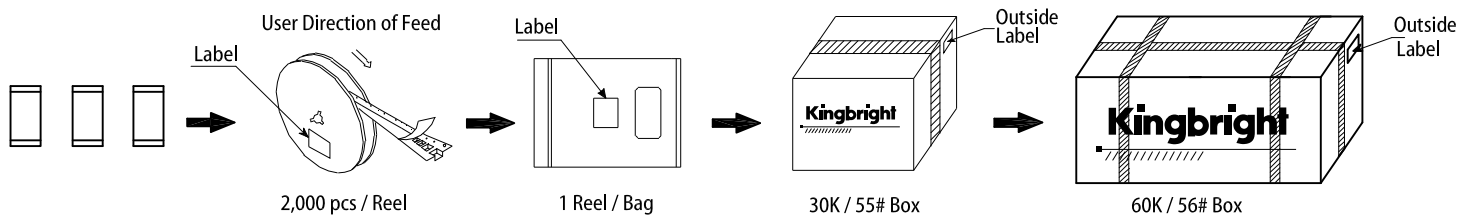
X-axis: Ambient temperature ($^\circ\text{C}$) [-40 to 100]

Figure 1 is a graph showing the temperature profile of a polymer solution during the polymerization of methyl methacrylate. The Y-axis represents Temperature (°C) from 0 to 300, and the X-axis represents Time (sec) from 0 to 300. The profile starts at 25°C, rises to 150°C at 40s, then to 200°C at 160s (labeled "pre-heating 150~200°C 60~120s"). Above 200°C, the rate is 3°C/s max. It reaches a peak of 260°C max. at 210s (labeled "above 255°C 30s max."). The cooling rate is 6°C/s max. (labeled "260°C max. 10s max."). The temperature drops to 100°C at 250s. A label "above 217°C 60~150s" is also present.

Technical drawing of a tape with dimensions and a cross-section A-A. The drawing shows a tape with a width of $8^{+0.3}_{-0.1}$ and a thickness of 0.62 ± 0.1 . The tape has four circular holes with a diameter of $\phi 1.5 \pm 0.1$ and four rectangular holes with a width of 0.66 ± 0.1 and a height of 1.12 ± 0.1 . The distance between the centers of the circular holes is 4 ± 0.1 , and the distance between the centers of the rectangular holes is 2 ± 0.1 . The distance from the top edge to the center of the first circular hole is 1.75 ± 0.1 , and the distance from the bottom edge to the center of the first rectangular hole is 3.5 ± 0.1 . The tape is labeled "TAPE" and "A-A Section".

© 2017 Kingbright. All Rights Reserved. Spec No: DSAC4159 / 1203001434 Rev No: V.23A Date: 08/18/2017

PACKING & LABEL SPECIFICATIONS



Kingbright

XXXXXXXXXX-XXXX

P/NO: XXXXXXXX

QTY: XXXX pcs

S/N: XXXX

CODE: XXX

COUNTRY: CN

QC DATE: XXX XX XXXX PASSED

LOT NO:

XXXXXXXXXX-XXXX

1 RoHS Compliant

PRECAUTIONARY NOTES

1. The information included in this document reflects representative usage scenarios and is intended for technical reference only.
2. The part number, type, and specifications mentioned in this document are subject to future change and improvement without notice. Before production usage customer should refer to the latest datasheet for the updated specifications.
3. When using the products referenced in this document, please make sure the product is being operated within the environmental and electrical limits specified in the datasheet. If customer usage exceeds the specified limits, Kingbright will not be responsible for any subsequent issues.
4. The information in this document applies to typical usage in consumer electronics applications. If customer's application has special reliability requirements or have life-threatening liabilities, such as automotive or medical usage, please consult with Kingbright representative for further assistance.
5. The contents and information of this document may not be reproduced or re-transmitted without permission by Kingbright.
6. All design applications should refer to Kingbright application notes available at http://www.kingbright.com/application_notes